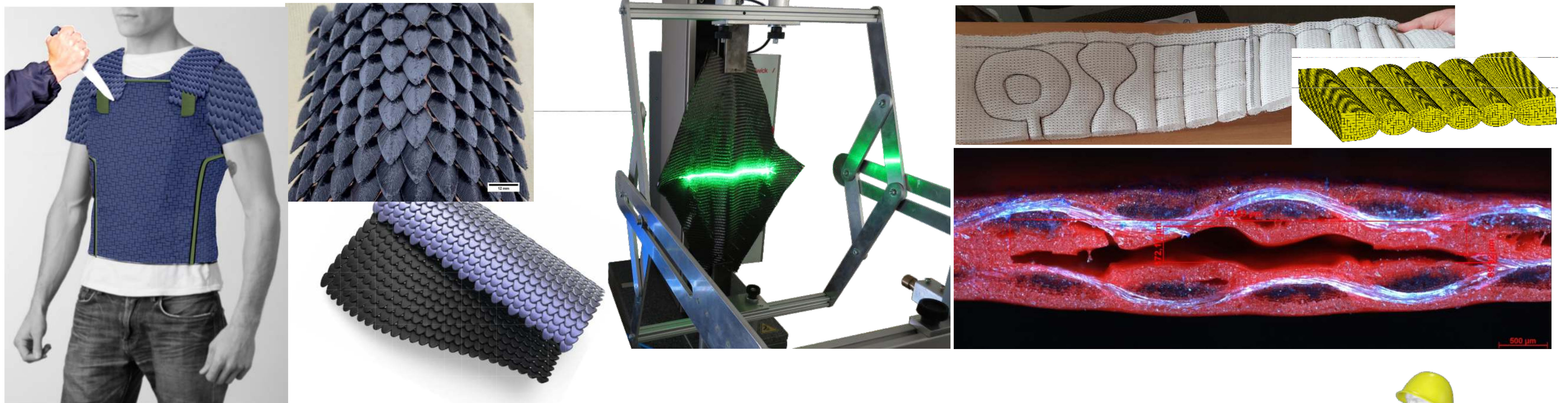


Further Highlights at **TEXPROCESS 2022**

HALL 8.0 B61



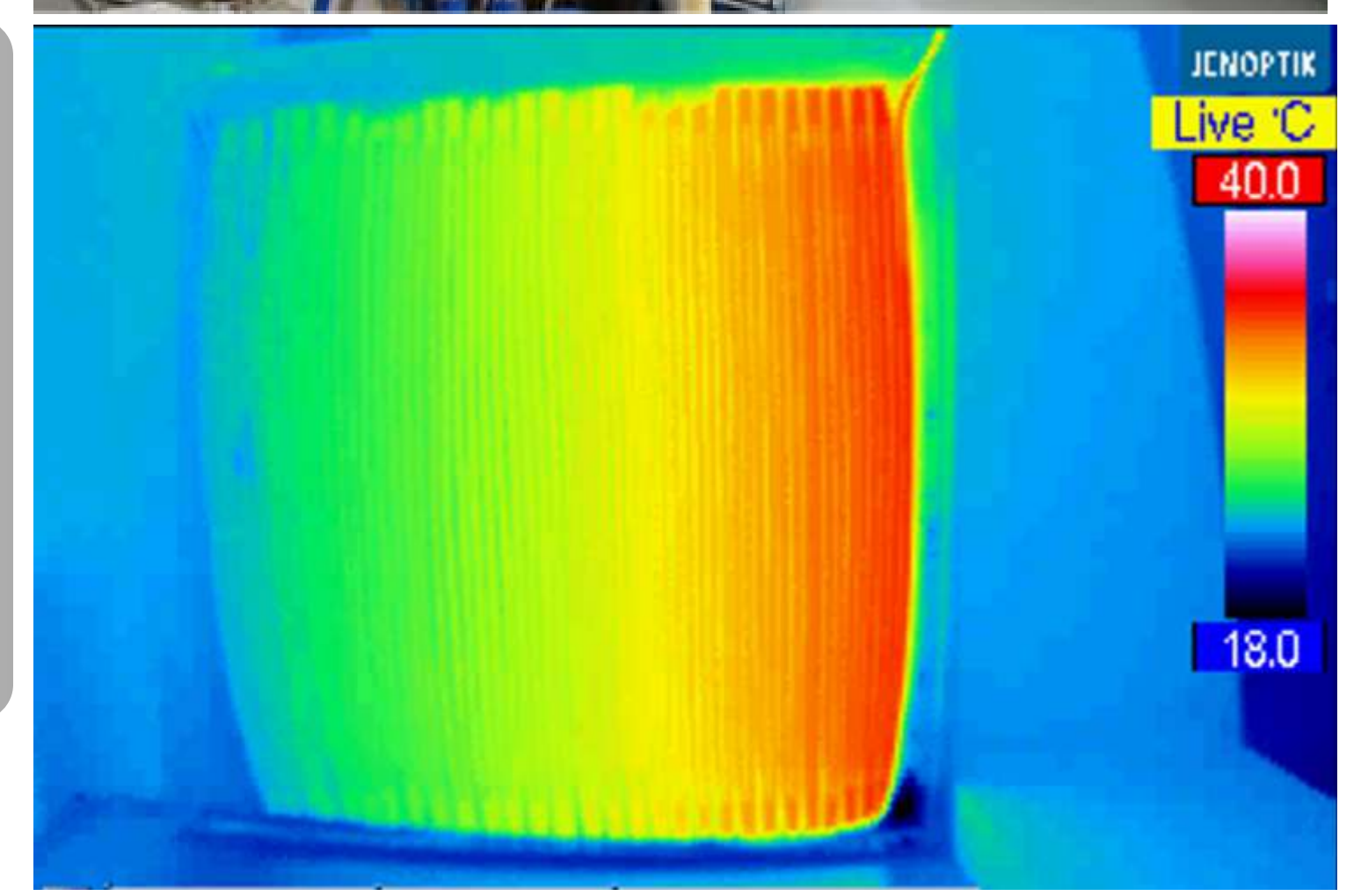
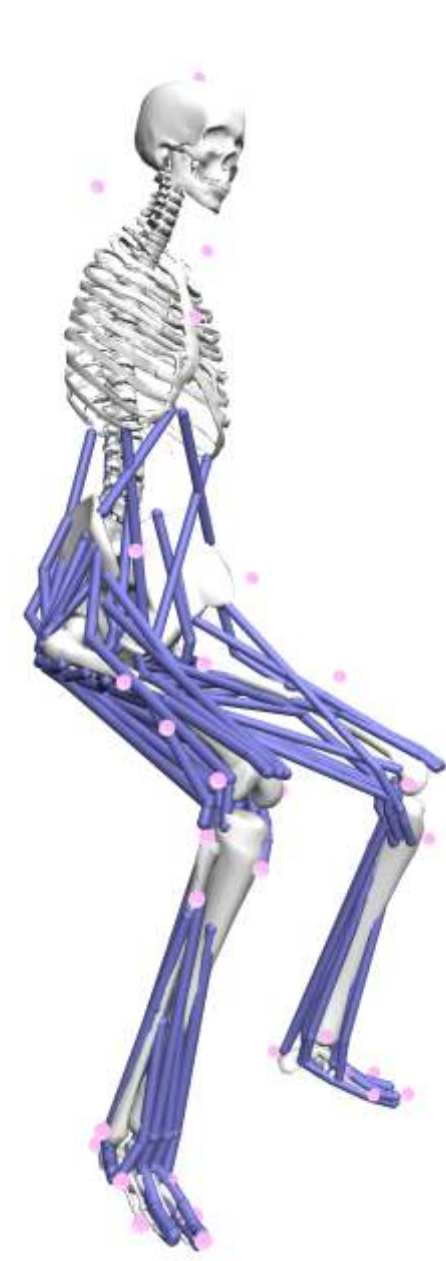
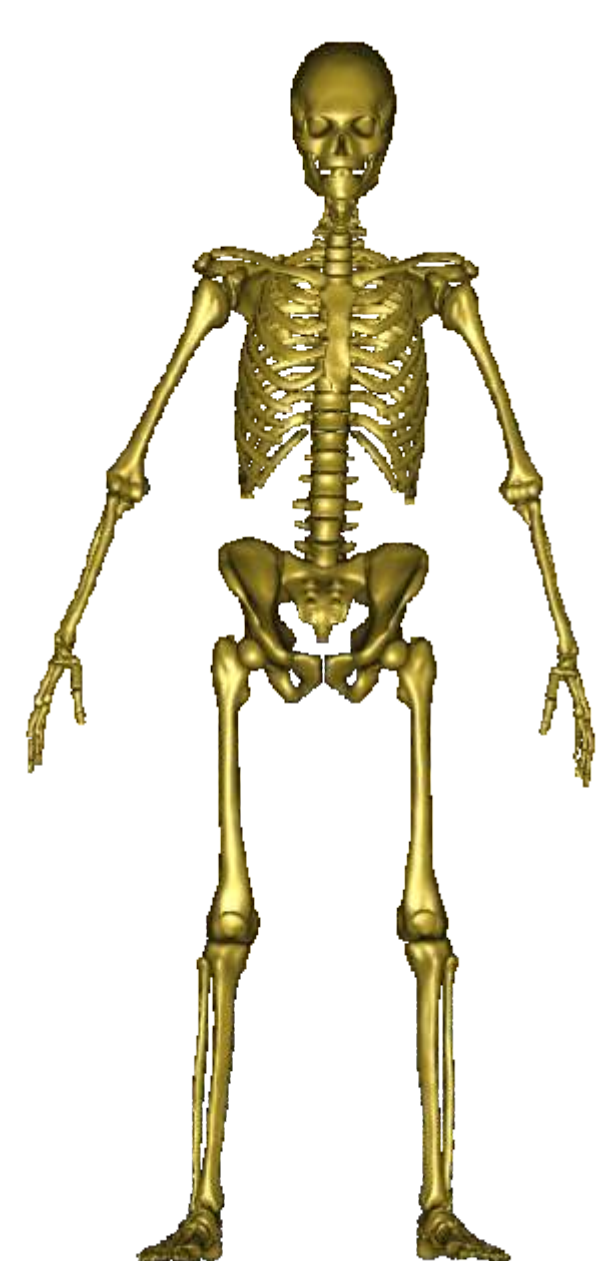
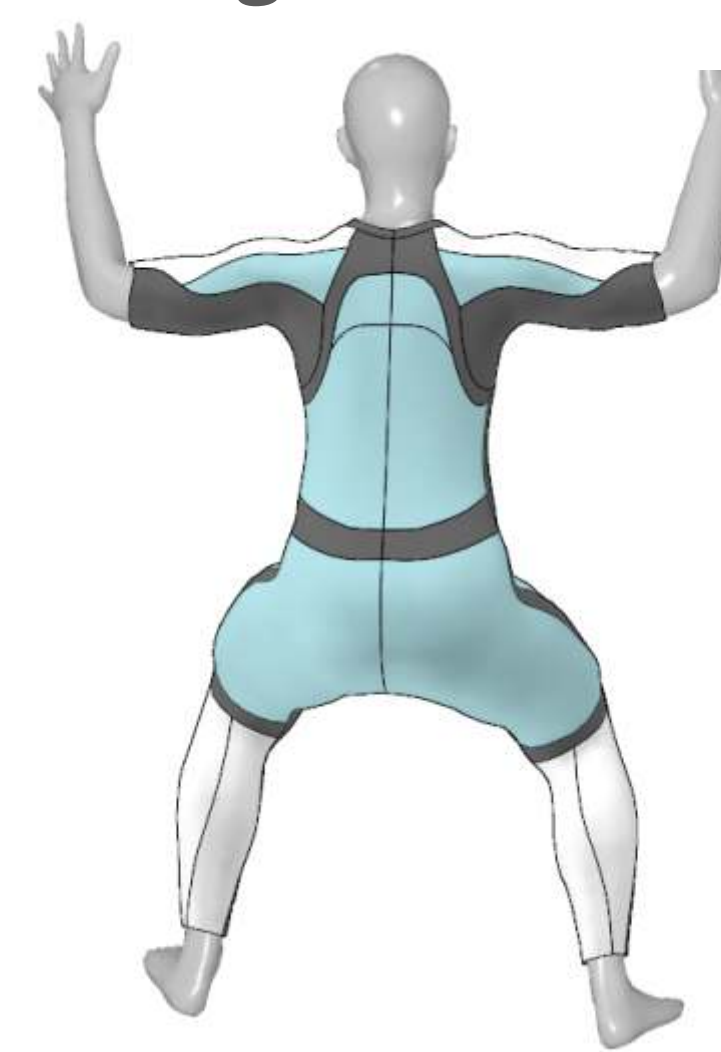
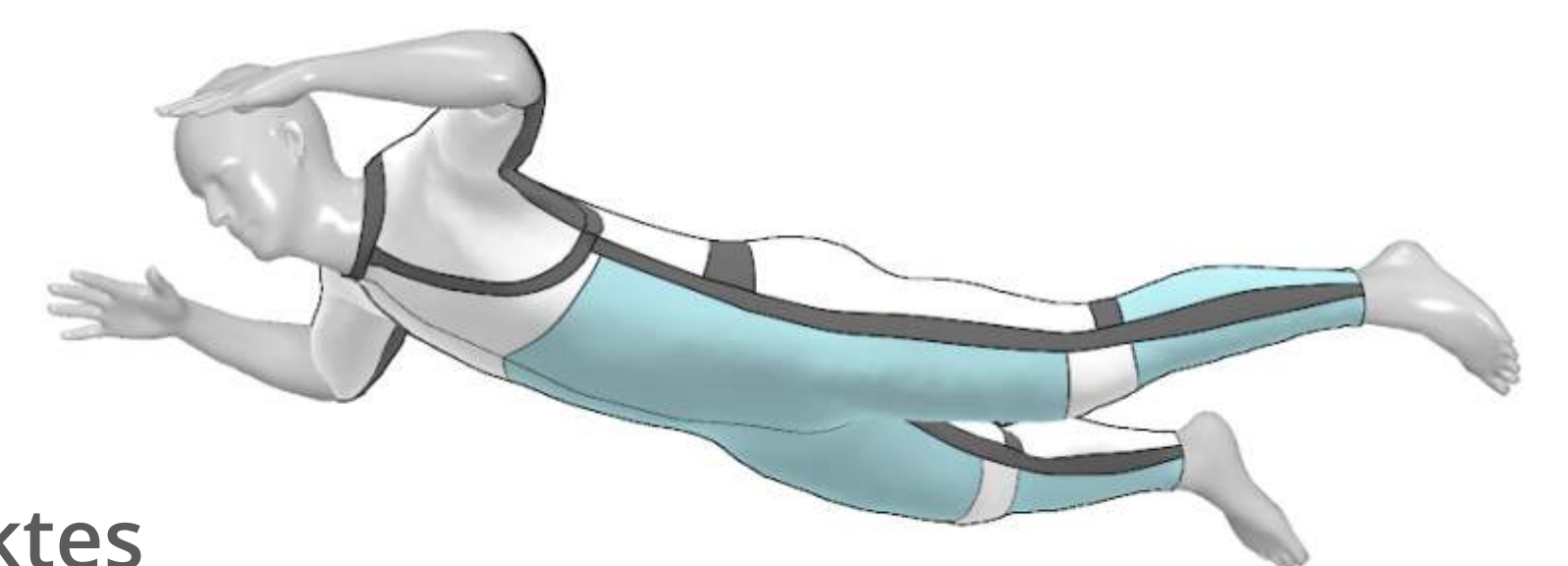
EN

- ▶ 3D-Scanning and surface reconstruction
- ▶ 4D-Scanning, capture of motion-data
- ▶ Kinematic human model
- ▶ Scalable 3D geometry models, automatic generation of 2D pattern cuts
- ▶ Simulation of loads (aerodynamical, thermophysiological simulation etc.)
- ▶ Additive manufacturing, Orthopaedic devices
- ▶ Thermal joining technique, Spacer Stitching
- ▶ Thermoactive textiles for indoors
- ▶ Digital haptic



DE

- ▶ 3D-Scan und Flächenrückführung
- ▶ 4D-Scan, Erfassung von Bewegungsdaten
- ▶ Kinematische Menschmodell
- ▶ Skalierung der Geometriemodelle und Schnittentwicklung, Visualisierung des Produktes
- ▶ Simulation der Beanspruchung
- ▶ Additive Fertigung, Orthopädische Hilfsmittel
- ▶ Thermische Fügeverfahren, Abstandsnähen
- ▶ Thermoaktive Raumtextilien
- ▶ Digitale Haptik



We are looking forward to your attendance at **TEXPROCESS** in the Hall 8.0 B61.

